



Summer Slugger

Each summer, students lose critical math and literacy skills, widening the achievement gap and requiring substantial remediation at the start of each year. To prevent this “summer slide,” EVERFI has partnered with Major League Baseball to develop a continuous and engaging learning experience that prepares students of all backgrounds to enter the next school year on track.

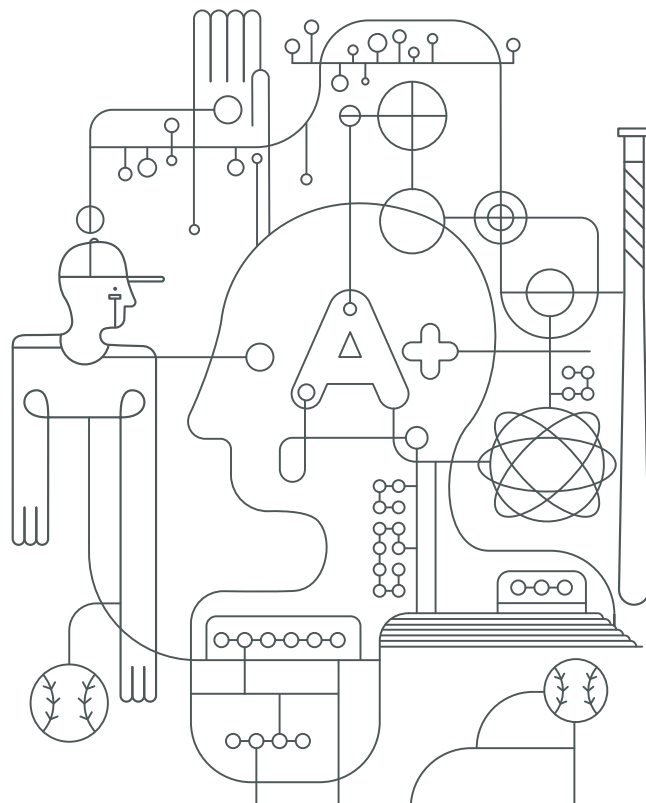
The 18-week program, targeted at 4th to 5th graders, unlocks activities at regular intervals and offers rewards for progress and consistency along the way. Students engage with content that reinforces key foundational and procedural skills while enjoying the freedom and motivation of a baseball-themed, game-based learning experience.

Course Highlights

- Flexible implementation options and timelines
- Real-time student score reports on your teacher dashboard
- Curriculum Guide with detailed course outline
- Supplemental, offline lesson plans
- Detailed standards alignment guide with your state-specific standards
- Answer Keys for all games

Course Topics

- Units of Measurement
- Place Value
- Arithmetic
- Geometry
- Spelling
- Phonemic Awareness
- Vocabulary
- Comprehension



Recommended Grade Level: 4-5

Total Time: 20 minutes a week for 18 weeks

Subject Fit: Math, English

Standards Alignment: Common Core State Standards (CCSS), State Academic Standards

Course Flow



Lesson 1

Word
Catcher



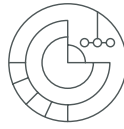
Lesson 2

Context
Crusher



Lesson 3

Pattern
Play



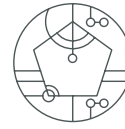
Lesson 4

Fraction
Fastball



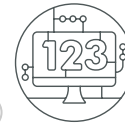
Lesson 5

Word
Lineup



Lesson 6

Polygon
Pitch



Lesson 7-35

Additional
Math and
ELA Games



Lesson 36

Sentence
Slugger

2.6 months of math skills are lost on average over the summer.

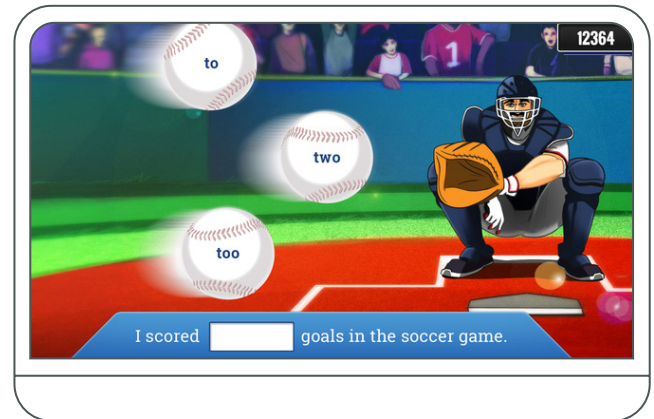
2/3 of income-based achievement gap is attributed to summer learning loss by beginning of high school.

Learning Activity Highlights

Factor Fielding - From decoding patterns to comparing prices, understanding factors and multiples helps us find the quickest way to an answer in many real-life situations. They serve as the foundation for numeracy and other key mathematical concepts. In Factor Fielding, students practice these against the backdrop of an exciting baseball game, striking batters out by pitching only the balls that are factors or multiples of a given number.

Word Catcher - Making connections between sounds and letters is central to effective communication, comprehension, and vocabulary. In this quick-paced spelling game, students observe, identify patterns, and select correctly spelled words. As words on baseballs fly toward the catcher, students must identify the correctly spelled word, earning points for speed and accuracy along the way.

For more information about bringing this program to your school or district, visit everfi.com/k-12



EVERFI is the leading education technology company that provides learners of all ages education for the real world, through innovative and scalable digital learning.

EVERFI

2300 N Street NW, Suite 500
Washington DC, 20037
202-602-1295
www.everfi.com

Moriah Burke
mburke@everfi.com